

BMB Reports – Manuscript Submission

Manuscript Draft

Manuscript Number: BMB-18-113

Title: Laminopathies; Mutations on single gene and various human genetic diseases

Article Type: Mini Review

Keywords: Lamin A; nuclear membrane; Laminopathy; EDMD; HGPS

Corresponding Author: Bum-Joon Park

Authors: So-mi Kang¹, Min-Ho Yoon¹, Bum-Joon Park^{1,*}

Institution: ¹Department of molecular biology, College of Natural Science, Pusan National University, BUSAN (46241), Korea (Republic of),

Manuscript Type: Mini Review

Title: Laminopathies; Mutations on single gene and various human genetic diseases

So-mi Kang, Min-Ho Yoon and Bum-Joon Park

Affiliation: Department of molecular biology, College of Natural Science, Pusan National University, BUSAN (46241), Korea (Republic of)

Running Title: Mutations on Lamin A induce Laminopathies.

Keywords: Lamin A, nuclear membrane, Laminopathy, EDMD, HGPS

Corresponding Author's Information: Bum-Joon Park (Tel: 82-51-510-2220/E-mail:bjpark1219@pusan.ac.kr.

ABSTRACT

Lamin A and its alternative splicing product Lamin C are the key intermediate filaments (IFs) of the inner nuclear membrane intermediate filament. Lamin A/C forms the inner nuclear mesh with Lamin B and works as a frame with a nuclear shape. In addition to supporting the function of nucleus, nuclear lamins perform important roles such as holding the nuclear pore complex and chromatin. However, mutations on the Lamin A or Lamin B related proteins induce various

types of human genetic disorders and diseases including premature aging syndromes, muscular dystrophy, lipodystrophy and neuropathy. In this review, we briefly overview the relevance of genetic mutations of Lamin A, human disorders and laminopathies. We also discuss a mouse model for genetic diseases. Finally, we describe the current treatment for laminopathies.

INTRODUCTION

The main character of eukaryotes is the presence of separated genome containing nucleus from cytoplasm (1). Although there are many merits to the existing nucleus acting as a separated organelle (stable maintenance of genomic material and alternative use of genetic material), the morphology of the nucleus needs to be maintained and the materials should be transported across the nuclear membrane, which is continuous with the Endoplasmic Reticulum (ER; 2). To maintain the nuclear morphology and ensure resilience, the intermediate filament mesh in the inner nuclear membrane and the nuclear plasm can also co-evolve with eukaryotic cells. The core components of the nuclear intermediate filaments (IFs) are Lamin A, Lamin C, and Lamin B (3). These proteins are conserved from yeast to mammalian cells (4). However, these proteins do not seem to be part of the simple physical network of the nuclear plasm. Lamin A/C forms a network and is associated with Emerin and the nuclear pore complex (5,6). Emerin is a linker between the Lamin A/C mesh and the cytoplasmic actin filament (7). Thus, this interaction may involve the localization of the nucleus in all cells and nuclear movement when cells migrate (8). A more interesting feature is the absence of Lamin A/C expression in stem cells and neurons (9,10); these types of cells only express Lamin B as a nuclear IF.

Due to the various functions of Lamin A/C, genetic mutations on Lamin A/C induce a broad range of human genetic diseases (so called laminopathies; 11-14). The case of laminopathy is very unusual. In general, mutations on a single gene are involved in a single disease. For example, various types of genetic mutations on p53 are related to cancer or cancer-related pathogenesis (15). However, mutations on Lamin A/C can induce different diseases from premature aging to neuropathy.

In this paper, we discuss the physiological processing of Lamin A/C and the relevance of mutations and laminopathies. We also describe the recent treatment of laminopathies.

Lamin A processing

The LMNA gene is located on chromosome 1q21.2 loci and is composed of 12 exons (Fig. 1; 16). Exons 1-10 between Lamin A and Lamin C are identical (Fig. 1) and exons 11 and 12 are specific to Lamin A. Lamin C is produced by unique exon 11, which is transcribed by alternative splicing and translated into only 6 amino acids (VSGSRR; 17). Exon 12 on Lamin A possesses a CaaX motif (actual amino acid sequence is CSIM), which is at the end of Lamin A and the farnesylated motif (18). Lamin A is first produced as prelamin A containing the CaaX motif and matures by protease-mediated cleavage (17,18). Thus, matured Lamin A does not have a farnesylated CaaX motif. Zmspte24 has been suggested as the responsible protease for Lamin A maturation (19). Loss of Zmste24 also induces laminopathies (lipodystrophy and dermatopathy; 20,21). Thus, the correct processing of Lamin A is also important for maintaining a healthy cellular condition. The biological function of C-terminal farnesylation would be targeting of Lamin A to nuclear membrane. However, considering that only mature Lamin A mouse expression is indistinguishable from wild type mouse (22), it is unclear why Lamin A is expressed as prelamin A. This implies that matured Lamin A does not work as an attached form of the nuclear membrane. In contrast, the binding of Lamin A (prelamin A) on the nuclear inner membrane may cause problems (laminopathies). The CaaX motif of Lamin B expressed differentially from Lamin A is not eliminated, and Lamin B is associated with the nuclear membrane (23). These results suggest that the primary nuclear IF is the Lamin B mesh. In fact, Lamin B is expressed in all types of cells, including stem cells and neurons. In addition, the rarity of laminopathies by Lamin B mutation also supports the possibility that Lamin B is a more essential IF than Lamin A.

Laminopathies and mutations

As described previously, mutations on Lamin A or related proteins induce various types of human diseases. These diseases are divided into two large categories: primary laminopathies which are induced by mutations on Lamin A and secondary laminopathies which are caused by mutations on Lamin B (Lamin B1 and Lamin B2), prelamin processing proteins (such as Zmpste24) or lamin binding proteins (such as emerin). To date, more than 400 mutations in the Lamin A gene have been identified from patients. However, each mutation has a very wide range of phenotypes, and the genetic features vary such that in some cases function is gained, while in others function is lost. Fig. 2 and table 1 show the mutations of Lamin A and the related diseases. The following section describes several mutations and their relevance to disease symptoms.

Muscular dystrophy

Many types of Lamin A mutations are related to muscular dystrophy. However, the tissues first affected differ from genetic mutations. Commonly called ‘muscular dystrophy’, the disease was first described in 1955 as Emery-Dreifuss muscular dystrophy (EDMD), which affects 1 in 100,000 births (24,25). EDMD is divided into 3 groups as follows. The first group is referred to as autosomal dominant EDMD (AD-EDMD). A large portion of mutations on Lamin A is included in this group. Thus, EDMD-related Lamin A mutations are generally gain-of-function mutations. Numerous mutations have been reported as EDMD-related mutations (table 1). The second group is referred to as autosomal recessive EDMD (AR-EDMD). Some types of Lamin A mutations that make stop codon are represented in this group (26). The third group is referred to as X-linked EDMD (XL-EDMD). This type of mutation is caused by a loss of emerin, Lamin A binding protein (25,27). Since the emerin gene is located on the X-chromosome, XL-EDMD

affects males. Although XL-EDMD causes very severe muscle dystrophy, the emerin knockout mouse model shows a healthy condition with XL-EDMD (28). This demonstrates the genetic difference between human and mouse species.

EDMD primarily affects skeletal muscles, and is detected from teenage years (26,29). The characteristic of EDMD is a slow, progressive wasting of skeletal muscles in the shoulder girdle and distal leg muscles. The histological features of the muscles of a person affected by EDMD are various muscle fiber sizes and the mislocalization of the cell nucleus (25-29). Cardiac muscle dystrophy is also observed in EDMD, which differs from dilated cardiomyopathy (CMD) in which skeletal muscles are not affected (26,29). Thus, mutations causing EDMD seem to induce broader functional defects than CMD-related mutations. Although CMD is induced by other genes, 5 mutations on Lamin A have been reported to be related to CMD (30). In addition, Lamin A mutations also induce Limb-girdle muscular dystrophy, type 1B, and Malouf syndrome (mutations A57P and L59R, 31-34). Interestingly, A57P and L59R mutations are also found in atypical Werner syndrome (A57P) and CDM1A (L59R). The reason why identical mutations induce different phenotypes has yet to be found. Table 1 shows the relevance of Lamin A mutations and human laminopathies.

Lipodystrophy

The clinical feature of Lipodystrophy (LD) is the reduction or loss of subcutaneous adipose tissue (35). Loss of fat has been detected from childhood or early adulthood. Two categories of LD are caused by mutation on Lamin A or related proteins: Familial partial lipodystrophy type 2 (FPLD2) and Mandibuloacral dysplasia (MAD). The main areas of the body affected by AMD are the face, neck and trunk. Loss of adipose tissue can cause insulin resistance, and subsequently diabetes. The lipodystrophy-related Lamin A mutations are listed in Table 1.

Neuropathies

Duplication or overexpression of Lamin B1 induces adult-onset autosomal dominant leukodystrophy (ADLD), which is slowly progressive (36,37). Symptoms are therefore apparent in people in their 40s and 50s. On the other hand, Lamin A mutation (R298C) can induce Charcot-Marie-Tooth (CMT) disorder (autosomal recessive CMT2A). However, the reason why the overexpression of the Lamin B1 or Lamin A mutation induces neuropathies has not yet been addressed until now.

Segmental progeroid diseases

Although mutations on Lamin A induce various types of diseases, the most interesting feature is their promotion of premature aging. Since the aging process is believed to be generated by very complicated mechanisms, it is astonishing that a single mutation on Lamin A promotes the aging process.

Hutchinson-Gilford progeria syndrome (HGPS) is a well-known aging related disease (38). HGPS is a very rare genetic disorder (1 in 20,000,000), in which all aging related features are displayed at an early stage, except cancer and neuro-degenerative diseases (38-40). HGPS patients suffer from sarcopenia, lipodystrophy, diabetes, cataracts, and atherosclerosis (41). In general, patients die from cardiovascular complications in their early teenage years (41,42). At least 90% of all HGPS cases are caused by a single base pair substitution at exon 11 of the Lamin A gene (c.1824C>T, p.G608G). Although this mutation does not change the amino acid, it generates a new splicing donor site (Fig. 2A). Thus, the product of mutation is 50 amino acid deleted (intra-deletion) abnormal Lamin A, so called progerin (Fig. 3A; 38). Since 50 amino acid sequences containing Zmpste24-cleavage sites are deleted, progerin is not processed by protease, and the farnesylated CaaX motif remains. Based on this, an attempt has previously been made to use the inhibitor of farnesyl-transferase (lonafarnib) as a treatment for HGPS, although this treatment did not show a favorable outcome (43).

Since many clinical features of HGPS resemble the physiological aging process, many researchers have expressed interest in the molecular mechanism by which progerin promotes aging (44). In fact, in healthy people, progerin expression is detected and increases with the aging process (45). Also, the cellular characteristic of HGPS, nuclear blebbing, is detected in normally aged cells (Fig. 3B), supporting the belief that the aging process induced by HGPS is a phenocopy of the physiological aging process. In addition to progerin production, several mutations have been reported to be related to HGPS.

Among the secondary laminopathy, *Zmpste24* deletion is also related to segmental progeroid syndrome, Restrictive Dermopathy (RD; 46). Usually, RD patients die within a few weeks of birth due to respiratory failure (47). However, the *Zmpste24*^{-/-} mouse can live longer than 6 months, although it has a small body size and aging-related phenotypes. This difference raises a new question about how the mouse model can accurately show the disease-phenotype of humans, and further indicates the difference between human and mouse systems. Along with HGPS, Werner syndrome (WS) is another well-known premature aging disease (48). Since premature aging features are displayed after puberty, it is called the ‘progeria of the adult’. Although clinical features are detected after puberty, WS shows all of the aging features, such as skin atrophy, ulcers, cataracts, type 2 diabetes mellitus, sarcoma, etc. (49,50). Thus, WS is also believed to be a useful model for studying the physiological aging process with HGPS. Although it is a rare genetic disorder, the incidence of WS is unusually high in Japan (51). Causal mutation of WS is a loss of the WRN gene which encodes a DNA helicase, and is included in the RecQ4 family (48). Although about 80% of WS cases are caused by WRN mutation, the remaining 20% do not harbor the WRN mutation (atypical Werner syndrome: AWS; 52). Among the WS cases, a small portion (about 20 %) has mutations on Lamin A (table 1). These features suggest that some types of Lamin A mutations can disrupt the function of

WRN.

Mouse model for Laminopathies

Mouse models are widely used to understand the physiological and pathological mechanism of human genes. The appropriate mouse model is critical in drug development for human diseases. Consequently, many trials have been performed to create a mouse model for human laminopathies. The following section summarizes the laminopathy-related mouse models.

Lamin A related knockout models (Table 2)

To address the function of Lamin A, a Lamin A/C knockout mouse has been developed by the disruption of exon 8 to exon 11 (53). The elimination of all Lamin A and Lamin C shows growth retardation and loss of body weight. Collectively, Lamin A/C deletion induces EDMD-like phenotypes. However, heterozygous mice do not show any pathological features, indicating that a single copy of LMNA is sufficient for normal function performance. In contrast to total Lamin A/C deletion, the Lamin A deleted mouse model (generated by the deletion of exon 11) does not show apparent abnormalities (56). This result implies that, at least in the mouse model, Lamin A is dispensable for normal development when Lamin C is normally expressed. In addition, a functional redundancy exists between Lamin A and Lamin C. The most interesting mouse model is *Lmna*^{LAO/LAO} (22). While this mouse expresses only matured Lamin A, it is entirely normal with a nuclear defect in the fibroblast. This result leads to the same conclusion that, at least in the mouse system, prelamin A is dispensable for normal development. In fact, if Lamin A does not contain exon11 and 12, it is almost identical to Lamin C. In contrast, *Zmpste24* knockout mice display progeria-like phenotypes such as growth retardation, muscular dystrophy, and short life span (6-7 months). Thus, this model has been used for the study of HGPS. However, as described above, *Zmpste24* deletion evokes RD.

From the knockout mouse model of Lamin A or Zmpste24, normal function of Lamin A is required for normal development and preventing progeria features.

An emerim knockout mouse model has also been developed to study EDMD (57,58). However, in contrast to human EDMD, complete emerin knockout does not produce EDMD phenotype. This result suggests that the regulation mechanism of Lamin A or nuclear IF between human and mouse significantly differs.

Lamin A Mutant knock-in mouse model (Table 3).

Since EDMD or lipodystrophy is an autosomal dominant pattern, to mimic these features, several types of transgenic mouse models have been proposed (59-67). Curiously, AD-EDMD related mutations do not induce the EDMD phenotype in the knock-in mouse model. For example, *Lmna*^{wt/H222P} mice show a phenotype undisguisable from wild type mice (62), even though this mutation induces AD-EDMD. Instead, *Lmna*^{H222P/H222P} mice (homozygous mice) display EDMD phenotypes such as muscle dystrophy and lipodystrophy. We can find a similar pattern in other types of mouse model (Table 3). These differences strongly suggest a fairly significant difference between human and mouse systems.

Among the various knock-in mouse models, the *Lmna*^{G609G} model has recently been intensively studied because it closely copies the human HGPS (67). Although this model shows the same limitation, *Lmna*^{G609G/G609G} also shows very similar HGPS features such as obvious growth retardation, cardiovascular defects, and very short life span. Thus, using this model, intensive screening and development of new drugs for HGPS are currently being carried.

In addition to the knock-in mouse model, Lamin B1 mouse models have been generated (table 4) since easily eliminated Lamin B1 induces an embryonic lethal phenotype (or neonatal lethal; 68). In contrast, the overexpression of Lamin B1 induces ADLD, which is consistent with

human disease features (69).

Current treatment of laminopathies

Until now, an appropriate treatment for the fundamental pathogenic mechanism of laminopathies has not been suggested. Today, treatment for laminopathies is limited to relieving symptoms. Corrective surgery can be used for distorted body shape in EDMD (70) and coronary artery bypass surgery can be performed for HGPS (71). However, none of these treatments can cure the roots of these diseases.

For EDMD, the partial effect of rapamycin has been reported in a EDMD mouse model (72,73). However, long term treatment of rapamycin can induce side effects such as lung toxicity, insulin resistance, and cataract. Thus, rapamycin is not an appropriate drug for EDMD.

Since farnesyl-residue is retained in progerin, lonafarnib (an inhibitor of farnesyl-transferase) has been used in the treatment of HGPS patients (74). Indeed, lonafarnib showed a favorable effect on nuclear morphology in a cell experiment (75). In addition, this chemical improved the disease phenotype in the *Zmste24*^{-/-} mouse model (76). However, a phase II clinical trial with HGPS patients did not show any therapeutic effect (43,77). Since lonafarnib has been developed as an anti-cancer drug, it is toxic to normal cells, rendering long-term treatment impossible. Indeed, long term treatment of lonafarnib induces a donut-shaped cell nucleus and defects in cell division (78). Considering the above, the treatment of lonafarnib for HGPS is not reasonable.

The co-treatment of lonafarnib and rapamycin has recently been suggested, and a clinical trial is on-going by the Progeria Research Foundation (43). However, as described above, the lonafarnib and rapamycin chemicals are not suitable for long-term treatment and they cannot correct the basic mechanism of HGSP. Antisense oligonucleotide has also been proposed for

treatment of HGPS (79), and has been shown to extend the life span of a HGPS mouse model (*Lmna*^{G609G/G609G}) by about 4 weeks (average life span: 16 weeks vs. 20 weeks; 80). However, until now, it has been impossible to deliver the antisense oligonucleotide to all tissues. Other approaches are currently being made to find a drug for HGPS, for example by generating a new drug for HGPS based on a novel pathological mechanism. The previous pathogenic mechanism is the accumulation of pre-lamin A and retention of farnesyl-residue. However, while *Zmspte24*^{-/-} induces RD, it does not induce HGPS. This implies that progerin, a causal product of HGPS, has a unique pathological mechanism. A recent study suggested that progerin shows a very strong binding affinity with wild type Lamin A and disrupts the nuclear membrane structure (45). A new progerin-Lamin A binding inhibitor (small chemical) has thus been proposed as a candidate drug for HGPS (45). The treatment of HGPS with this chemical can extend the life span provided the antisense oligonucleotide treatment is carried out using the *Lmna*^{G609G/G609G} mouse model. Moreover, an increase of the chemical dose can extend the life span up to 27 weeks (Fig. 4; 45). Thus, this chemical could be a strong candidate drug for HGPS.

Conclusion

In this paper, we described laminopathies and mutations. Mutations on Lamin A or related genes induce a very diverse spectrum of human diseases ranging from muscular dystrophy to progeria. In addition, we found that some mouse models are inappropriately matched for human disease due to the different systems or different roles of Lamin A among organisms. It would thus be beneficial to understand why and how Lamin A mutations on different sites or even in the same site generate different human pathologies. Until now, no clear answer on this has been presented.

Lamin A is normally processed through a multi-step process as follows. Prelamin A develops into mature Lamin A and forms the dimer. The dimerized Lamin A then develops into tetramerization by dimer-dimer interaction. Tetramerized Lamin A then forms the mesh network with Lamin A or with other linker proteins such as emerin. Therefore, each residue of Lamin A is important for each step. However, we did not know the exact mechanism of Lamin A mesh processing. In addition, Lamin A tends to hold the chromosome to retain chromosomal territory. Thus, if we know the exact molecular mechanism of Lamin A processing and function, we could develop more effective drugs for laminopathies.

Laminopathies are a group of very rare genetic disorders. However, they are involved in various types of diseases. As shown above, the progerin-mediated aging process is believed to be useful for understanding the general aging process. Similarly, laminopathy-related EDMD is possibly related to aging-induced sarcopenia or cardiac diseases. Thus, understating of the molecular mechanism of laminopathies would be useful for the investigation of other chronic diseases including diabetes and aging.

ACKNOWLEDGMENTS

This work was supported by a 2-Year Research Grant from Pusan National University (2017-2019).

CONFLICTS OF INTEREST

The authors declare no conflict of interest.

FIGURE LEGENDS

Figure 1. Structure of LMNA gene. LMNA, encoding Lamin A/C is composed of 12 exons and the two produced proteins, Lamin A and Lamin C. Exon 1-10 are commonly used for Lamin A and C proteins. However, exon 11 and 12 are only used by Lamin A. Since the end of exon 12 encodes CaaX motif (actually CSIM), only Lamin A is a target for farnesyl-transferase. In addition, the Zmpste24 protease target sequence is located in exon 11. Thus, Farnesylated Lamin A (prolamin A) is processed into mature Lamin A. Lamin C is produced by Exon 1-10 differentially from Lamin A. However, the final exon is differentially used from lamin by alternative splicing (dark blue box in middle panel). Consequently, the six C-terminal amino acids (VSGSRR; dark blue box) are uniquely derived from Lamin A. We also showed the structural domains of Lamin A/C.

Figure 2. Mutations on Lamin A. To date, more than 400s mutations have previously been found in Laminopathies. Mutations are widely distributed throughout the entire Lamin A gene. See table 1 for co-relationship between mutations and diseases.

Figure 3. Lamin A processing and nuclear deformation. (A) Lamin A processing. After translation, farnesyl-transferase attaches Farnesyl-residue to CaaX motif at C-terminal end. However, protease such as Zmpste 24 cleaved the C-terminal domain. Thus, matured Lamin A does not contain Farnesyl-residue (left progression). In contrast, mutation on G609G (causal mutation of HGPS) generated an abnormal splicing donor on exon 11 and produced progerin. Since progerin still possesses CaaX motif, it is farnesylated. However, this protein no longer has the Zmpste24 cleavage site. Thus, progerin has farnesyl-residue. (B) Nuclear morphology of HGPS cells (right panel). Compared to the normal cell (left panel), the nuclear membrane of this cell showed irregularity and several knots. Green indicates Lamin A/C.

Figure 4. Life span of HGPS mouse model. Lmna G609G/G609G mice showed a very short life span (average life span is 16 weeks). Treatment of Lamin A-progerin binding inhibitor (JH4) could extend life span up to 27 weeks. Chemicals were injected via intraperitoneal injection (i.p) with the indicated concentration (twice/week).

Table 1. Relevance of Lamin A mutations and human laminopathies.

Table 2. List of knockout mouse model of Lamin A or related proteins.

Table 3. List of point mutant mouse model for laminopathies.

Table 4. Mouse model of Lamin B mutations.

REFERENCES

1. McKenna T, Baek JH and Eriksson M (2013) Laminopathies. Genetic Disorders chapter 2, 28-64
2. Cronshaw JM, Kruchinsky AN, Zhang W, Chait BT and Matunis MJ (2002) Proteomic analysis of the mammalian nuclear pore complex. Journal of Cell Biology 158 (5), 915-927
3. Aebersold U, Cohn J, Buhle L and Gerace L (1986) The nuclear lamina is a meshwork of intermediate-type filaments. Nature 323, 560-564
4. Gruenbaum Y and Foisner R (2015) Lamins: Nuclear intermediate filament proteins with fundamental functions in nuclear mechanics and genome regulation. Annu Rev Biochem 84, 131-164
5. Clements L, Manilal S, Love DR and Morris GE (2000) Direct interaction between emerin and lamin A. Biochem Biophys Res Commun 267(3), 709-714

6. Zastrow MS, Vlcek S and Wilson KL (2004) Proteins that bind A-type lamins: integrating isolated clues. *J Cell Sci* 117(Pt 7), 979-987
7. Salpingidou G, Smertenko A, Hausmanowa-Petruciewicz I, Hussey PJ and Hutchison CJ (2007) A novel role for the nuclear membrane protein emerin in association of the centrosome to the outer nuclear membrane. *J Cell Biol* 178(6), 897-904
8. Chang W, Folker ES, Worman HJ and Gundersen GG (2013) Emerin organizes actin flow for nuclear movement and centrosome orientation in migrating fibroblasts. *Mol Biol Cell* 24(24), 3869-3880
9. Constantinescu D, Gray HL, Sammak PJ, Schatten GP and Csoka AB (2006) Lamin A/C expression is a marker of mouse and human embryonic stem cell differentiation. *Stem Cells* 24(1), 177-185
10. Röber RA, Weber K and Osborn M (1989) Differential timing of nuclear lamin A/C expression in the various organs of the mouse embryo and the young animal: a developmental study. *Development* 105(2), 365-378
11. Briand N and Collas P (2018) Laminopathy-causing lamin A mutations reconfigure lamina-associated domains and local spatial chromatin conformation. *Nucleus* 9(1), 216-226
12. Chojnowski A, Ong PF and Dreesen O (2015) Nuclear lamina remodeling and its implications for human disease. *Cell Tissue Res* 360(3), 621-631
13. Worman HJ (2012) Nuclear lamins and laminopathies. *J Pathol* 226(2), 316-325
14. Ben Yaou R, Muchir A, Arimura T et al (2005) Genetics of laminopathies. *Novartis Found Symp* 264, 81-90
15. Hollstein M, Sidransky D, Vogelstein B and Harris CC (1991) p53 mutations in human cancers. *Science* 253, 49-53
16. Fisher D, Chaudhary N (1986) cDNA sequencing of nuclear lamins A and C reveals primary

and secondary structural homology to intermediate filament proteins. *Proc Ntl Acad Sci USA* 83(17), 6450-6454

17. Structural organization of the human gene encoding nuclear lamin A and nuclear lamin C. *J Biol Chem* 268(22), 16321-16326

18. Barrowman J, Hamblet C, Geoge CM and Michaelis S (2008) Analysis of prelamin A biogenesis reveals the nucleus to be a CaaX processing compartment. *Mol Biol Cell* 19(12), 5398-5408

19. Barrowman J, Hamblet C, Kane MS and Michaelis S (2012) Requirements for efficient proteolytic cleavage of prelamin A by ZMPSTE24. *PloS One* 7(2), e32120

20. Landires I, Pascale JM and Motta J (2007) The position of the mutation within the LMNA gene determines the type and extent of tissue involvement in laminopathies. *Clin Genet* 71(6), 592-593

21. Broers JLV, Ramaekers FCS, Bonne G, Yaou RB and Hutchison CJ (2006) Nuclear lamins: laminopathies and their role in premature ageing. *Physiol Rev* 86(3), 967-1008

22. Coffinier C, Jung HJ, Li Z et al (2010) Direct synthesis of lamin A, bypassing prelamin A processing, causes misshapen nuclei in fibroblasts but no detectable pathology in mice. *J Biol Chem* 285(27), 20818-20826

23. Kitten GT and Nigg EA (1991) The CaaX motif is required for isoprenylation, carboxyl methylation, and nuclear membrane association of lamin B2. *J Cell Biol* 113(1), 13-23

24. Emery AE, Dreifuss FE (1966) Unusual type of benign x-linked muscular dystrophy. *J Neurol Neurosurg Psychiatry* 29(4), 338-342

25. Muchir A and Worman HJ (2007) Emery-Dreifuss muscular dystrophy. *Curr Neurol Neurosci Rep* 7(1), 78-83

26. Bonne G, Mercuri E, Muchir A et al (2000) Clinical and molecular genetic spectrum of

autosomal dominant Emery-Dreifuss muscular dystrophy due to mutations of the lamin A/C gene. *Ann Neurol* 48(2), 170-180

27. Helbling-Leclerc A, Bonne G and Schwartz K (2002) Emery-Dreifuss muscular dystrophy. *Eur J Hum Genet* 10(3), 157-161

28. Stewart CL, Kozlov S, Fong LG and Young SG (2007) Mouse models of the laminopathies. *Exp Cell Res* 313(10), 2144-2156

29. Canki-Klain N, Récan D, Milicić D et al (2000) Clinical variability and molecular diagnosis in a four-generation family with X-linked Emery-Dreifuss muscular dystrophy. *Croat Med J* 41(4), 389-395

30. Fatkin D, MacRae C, Sasaki T et al (1999) Missense mutations in the rod domain of the lamin A/C gene as causes of dilated cardiomyopathy and conduction-system disease. *N Engl J Med* 341(23), 1715-1724

31. Muchir A, Bonne G, van der Kooi AJ et al (2000) Identification of mutations in the gene encoding lamins A/C in autosomal dominant limb girdle muscular dystrophy with atrioventricular conduction disturbances. *Hum Mol Genet* 9(9), 1453-1459

32. Yuan W-L, Huang C-Y, Wang J-F et al (2009) R25G mutation in exon 1 of LMNA gene is associated with dilated cardiomyopathy and limb-girdle muscular dystrophy 1B. *Chin Med J* 122(23), 2840-2845

33. McPherson E, Turner L, Zador I, Reynolds K, Macgregor D and Giampietro PF (2009) Ovarian failure and dilated cardiomyopathy due to a novel lamin mutation. *Am J Med Genet* 149A(4), 567-572

34. Garg A, Subramanyam L, Agarwal AK et al (2009) Atypical progeroid syndrome due to heterozygous missense LMNA mutations. *J Clin Endocrinol Metab* 94(12), 4971-1983

35. Shackleton S, Lloyd DJ, Jackson SN et al (2000) LMNA, encoding lamin A/C, is mutated

in partial lipodystrophy. *Nat Genet* 24(2), 153-156

36. Padiath QS, Saigoh K, Schiffmann R et al (2006) Lamin B1 duplications cause autosomal dominant leukodystrophy. *Nat Genet* 38(10), 1114-1123

37. Schuster J, Sundblom J, Thuresson A-C et al (2011) Genomic duplications mediate overexpression of lamin B1 in adult-onset autosomal dominant leukodystrophy with autonomic symptoms. *Neurogenetics* 12(1), 65-72

38. Eriksson M, Brown WT, Gordon LB et al (2003) Recurrent de novo point mutations in lamin A cause Hutchinson-Gilford progeria syndrome. *Nature* 423(6937), 293-298

39. Rodríguez JJ, Pérez-Alonso P, Funes R and Pérez-Rodríguez J (1999) Lethal neonatal Hutchinson-Gilford progeria syndrome. *Am J Med Genet* 82(3), 242-248

40. Gillar PJ, Kaye CI and McCourt JW (1991) Progressive early dermatologic changes in Hutchinson-Gilford progeria syndrome. *Pediatr Dermatol* 8(3), 199-206

41. Merideth MA, Gordon LB, Clauss S et al (2008) Phenotype and course of Hutchinson-Gilford progeria syndrome. *N Engl J Med* 358(6), 592-604

42. Salamat M, Dhar PK, Neagu DL and Lyon JB (2010) Aortic calcification in a patient with Hutchinson-Gilford progeria syndrome. *Pediatr Cardiol* 31(6), 925-926

43. Gordon LB, Kleinman ME, Massaro J et al (2016) Clinical trial of the protein farnesylation inhibitors Lonafarnib, Pravastatin, and Zoledronic Acid in children with Hutchinson-Gilford progeria syndrome. *Circulation* 134(2), 114-125

44. Dechat T, Shimi T, Adam SA et al (2007) Alterations in mitosis and cell cycle progression caused by a mutant lamin A known to accelerate human aging. *Proc Natl Acad Sci USA* 104(12), 4955-4960

45. Lee SJ, Jung YS, Yoon MH et al (2016) Interruption of progerin-lamin A/C binding ameliorates Hutchinson-Gilford progeria syndrome phenotype. *J Clin Invest* 126(10), 3879-

46. Smigiel R, Jakubial A, Esteves-Vieira V et al (2010) Novel frameshifting mutations of the ZMPSTE24 gene in two siblings affected with restrictive dermopathy and review of the mutations described in the literature. *Am J Med Genet* 152A(2), 447-452
47. Mok Q, Curley R, Tolmie J and Marsden R (1990) Restrictive dermopathy: a report of three cases. *J Met Genet* 27(5), 315-319
48. Yu CE, Oshima J, Fu YH et al (1996) Positional cloning of the Werner's syndrome gene. *Science* 272(5259), 258-262
49. Hisama FM, Lessel D, Leistritz D et al (2011) Coronary artery disease in a Werner syndrome-like form of progeria characterized by low levels of progerin, a splice variant of lamin A. *Am J Med Genet* 155A(12), 3002-3006
50. Hisama FM, Kubisch C, Martin GM and Oshima J (2012) Clinical utility gene card for: Werner syndrome. *Eur J Hum Genet* 20(5), 1-3
51. Goto M, Horiuchi Y, Tanimoto K, Ishii T and Nakashima H (1978) Werner's syndrome: analysis of 15 cases with a review of the Japanese literature. *J Am Geriatr Soc* 26(8), 341-347
52. Chen L, Lee L, Kudlow BA et al (2003) LMNA mutations in atypical Werner's syndrome. *Lancet* 362(9382), 440-445
53. Sullivan T, Escalante-Alcalde D, Bhatt H et al (1999) Loss of A-type lamin expression compromise nuclear envelope integrity leading to muscular dystrophy. *J Cell Biol* 147(5), 913-920
54. Pendás AM, Zhou Z, Candiñanos J et al (2002) Defective prelamin A processing and muscular and adipocyte alterations in Zmpste24 metalloproteinase-deficient mice. *Nat Genet* 31(1), 94-99
55. Kubben N, Voncken JW, Konings G et al (2011) Post-natal myogenic and adipogenic

developmental: defects and metabolic impairment upon loss of A-type lamins. *Nucleus* 2(3), 195-207

56. Fong LG, Ng JK, Lammerding J et al (2006) Prelamin A and lamin A appear to be dispensable in the nuclear lamina. *J Clin Invest* 116(3), 743-752

57. Melcon G, Kozlov S, Cutler DA et al (2006) Loss of emerin at the nuclear envelope disrupts the Rb1/E2F and Myo D pathways during muscle regeneration. *Hum Mol Genet* 15(4), 637-651

58. Ozawa R, Hayashi YK, Ogawa M et al (2006) Emerin-lacking mice show minimal motor and cardiac dysfunctions with nuclear-associated vacuoles. *Am J Pathol* 168(3), 907-917

59. Pilat U, Dechat T, Bertrand AT et al (2013) The muscle dystrophy-causing Δ K32 lamin A/C mutant does not impair the functions of the nucleoplasmic lamin A/C-LAP2 α complex in mice. *J Cell Sci* 126(Pt 8), 1753-1762

60. Odgren PR, Pratt CH, Mackay CA et al (2010) Disheveled hair and ear (Dhe), a spontaneous mouse *Lmna* mutation modeling human laminopathies. *PLoS One* 5(4), e9959

61. Mounkes LC, Kozlov SV, Rottman JN and Stewart CL (2005) Expression of an LMNA-N195K variant of A-type lamins results in cardiac conduction defects and death in mice. *Hum Mol Genet* 14(15), 2167-2180

62. Arimura T, Helbling-Leclerc A, Massart C et al (2005) Mouse model carrying H222P-*Lmna* mutation develops muscular dystrophy and dilated cardiomyopathy similar to human striated muscle laminopathies. *Hum Mol Genet* 14(1), 155-169

63. Wang Y, Herron AJ and Worman HJ (2006) Pathology and nuclear abnormalities in hearts of transgenic mice expressing M371K lamin A encoded by an LMNA mutation causing Emery-Dreifuss muscular dystrophy. *Hum Mol Genet* 15(16), 2479-2489

64. Wojtanik KM, Edgemon K, Viswanadha S et al (2009) The role of LMNA in adipose: a

novel mouse model of lipodystrophy based on the Dunnigan-type familial partial lipodystrophy mutation. *J Lipid Res* 50(6), 1068-1079

65. Mounkes LC, Kozlov S, Hernandez L, Sullivan T and Stewart CL (2003) A progeroid syndrome in mice is caused by defects in A-type lamins. *Nature* 423(6937), 298-301

66. Varga R, Eriksson M, Erdos MR et al (2006) Progressive vascular smooth muscle cell defects in a mouse model of Hutchinson-Gilford progeria syndrome. *Proc Natl Acad Sci USA* 103(9), 3250-3255

67. Osorio FG, Navarro CL, Cadiñanos J et al (2011) Splicing-directed therapy in a new mouse model of human accelerated aging. *Sci Transl Med* 3(106), 106ra107

68. Vergnes L, Péterfy M, Bergo MO, Young SG and Reue K (2004) Lamin B1 is required for mouse development and nuclear integrity. *Proc Natl Acad Sci USA* 101(28), 10428-10433

69. Heng MY, Lin ST, Verret L et al (2013) Lamin B1 mediates cell-autonomous neuropathology in a leukodystrophy mouse model. *J Clin Invest* 123(6), 2719-2729

70. Ambrosi P, Mouly-Bandini A, Attarian S and Habib G (2009) Heart transplantation in 7 patients from a single family with limb-girdle muscular dystrophy caused by lamin A/C mutation. *Int J Cardiol* 137(3), e75-76

71. Dyck JD, David TE, Burke B, Webb GD, Henderson MA and Fowler RS (1987) Management of coronary artery disease in Hutchinson-Gilford syndrome. *J Pediatr* 111(3), 407-410

72. Ramos FJ, Chen SC, Garelick MG et al (2012) Rapamycin reverses elevated mTORC1 signaling in lamin A/C-deficient mice, rescue cardiac and skeletal muscle function, and extends survival. *Sci Transl Med* 4(144), 144ra103

73. Choi JC, Muchir A, Wu W and Iwata S (2012) Temsirolimus activates autophagy and ameliorates cardiomyopathy caused by lamin A/C mutation. *Sci Transl Med* 4(144), 144ra102

74. Kieran MW, Gordon L and Kleinman M (2007) New approaches to progeria. *Pediatrics* 120(4), 834-841
75. Capell B, Erdos M, Medigan J and Fiordalisi J (2005) Inhibiting farnesylation of progerin prevents the characteristic nuclear blebbing of Hutchinson-Gilford progeria syndrome. *Proc Natl Acad Sci USA* 102(36), 12879-12884
76. Fong L, Frost D, Meta M, Qiao X and Yang S (2006) A protein farnesyltransferase inhibitor ameliorates disease in a mouse model of progeria. *Science* 311(5767), 1621-1623
77. Gordon LB, Kleinman ME, Miller DT et al (2012) Clinical trial of a farnesyltransferase inhibitor in children with Hutchinson-Gilford progeria syndrome. *Proc Natl Acad Sci USA* 109(41), 16666-16671
78. Verstraeten VL, Peckham LA, Olive M et al (2011) Protein farnesylation inhibitors cause donut-shaped cell nuclei attributable to a centrosome separation defect. *108*(12), 4997-5002
79. Scaffidi P (2006) Lamin A-dependent nuclear defects in human aging. *Science* 312(5776), 1059-1063
80. Osorio FG, Navarro CL, Cadinanos J et al (2011) Splicing-directed therapy in a new mouse model of human accelerated aging. *Sci Transl Med* 3(106), 106ra107

Fig. 1

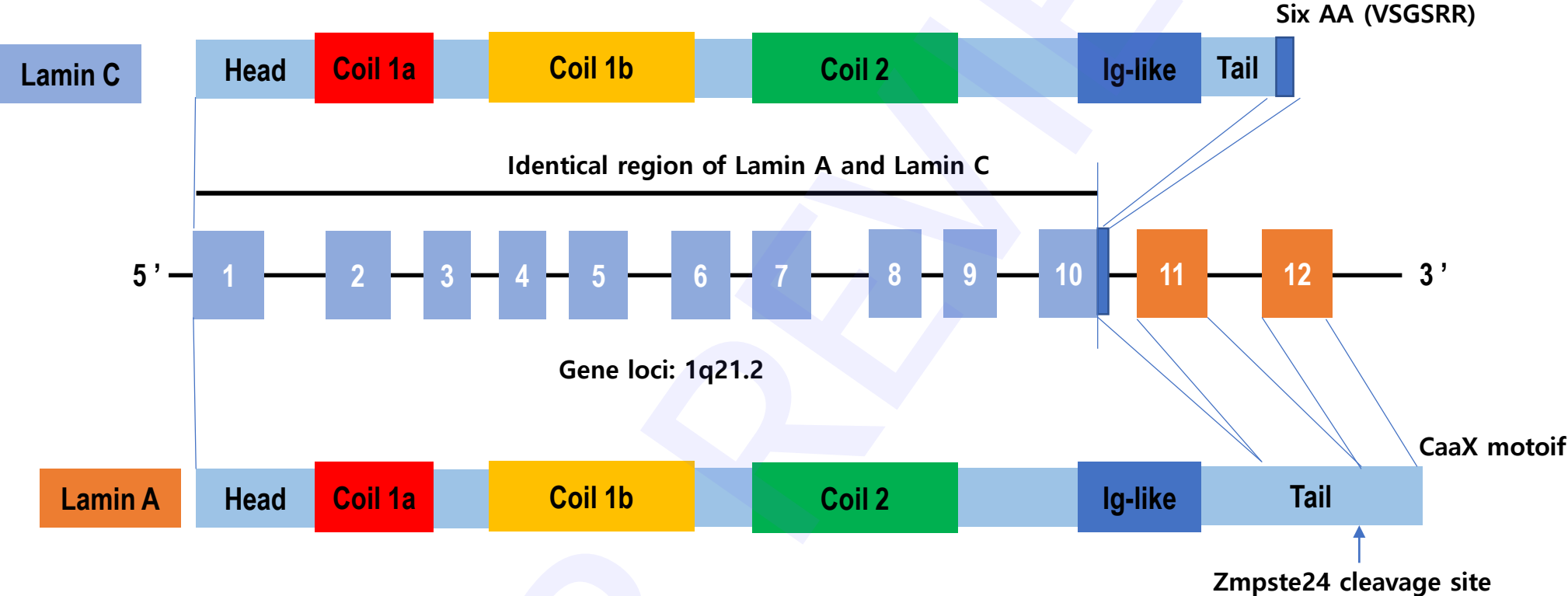
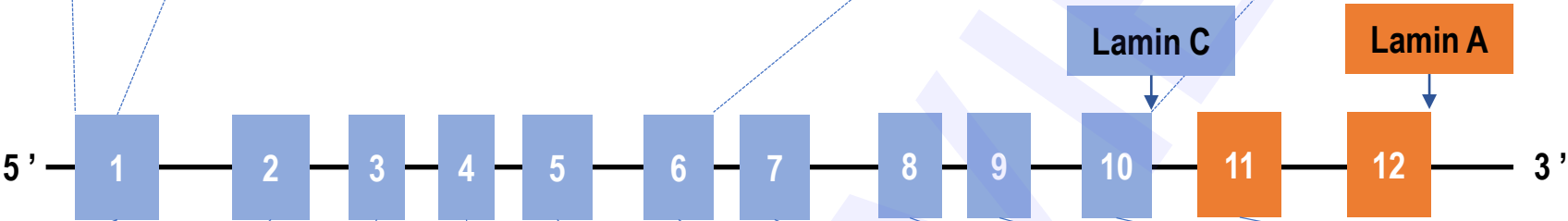


Fig. 2

Lamin A protein



LMNA gene



Q6X	A57P	R133L	R189P	L215P	L271P	E317K	R399C	D461Y	W520S	M540T	E578V
T10I	L59R	R133P	R190Q	H222P	Q294P	R336Q	R401C	G465D	R527C	R541H	S573L
R25P	R60G	L140P	R190W	H222Y	S295P	R343Q	R435C	W467R	R527H	R541C	R582H
R25G	R62G	L140R	D192G	R225Q	R298C	A347K	V440M	I469T	R527P	R541S	R584H
R25W	I63S	S143P	N195K	R225X	D300N	R349L	V442A	R471C	T528K	R541P	G602S
E33G	I63N	S143E	R196S	D230N	L302P	Q355X	D446V	Y481H	T528R	K542N	V607V
L35V	E65G	S143F	E203K	G232E	S303P	E358K	G449D	R482W	T528M		G608S
N39S	E82K	E145K	E203G	L248P		E361K	R453P	R482Q	A529V		G608G
A43T	L85R	T150P	ΔK208	R249Q		M371K	R453W	R482L	L529P		T623S
Y45C	R89C	E161K		R249W		R377H	L454P	P485R	L530P		R624H
R50S	R89L			Y259X		R377L	R455P	K486N			R644C
R50P	K97E			F260L		L380S	N456D				Q656Q
				Y267C		R386K	N456I				
				S268P			N456K				

Fig. 3

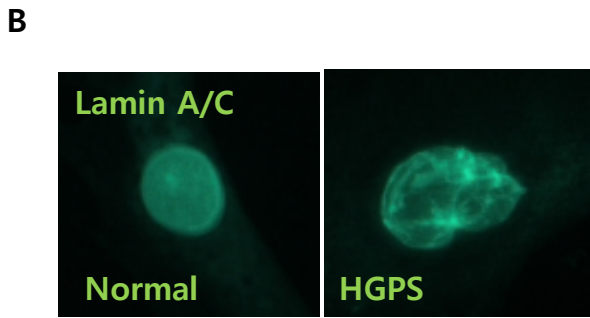
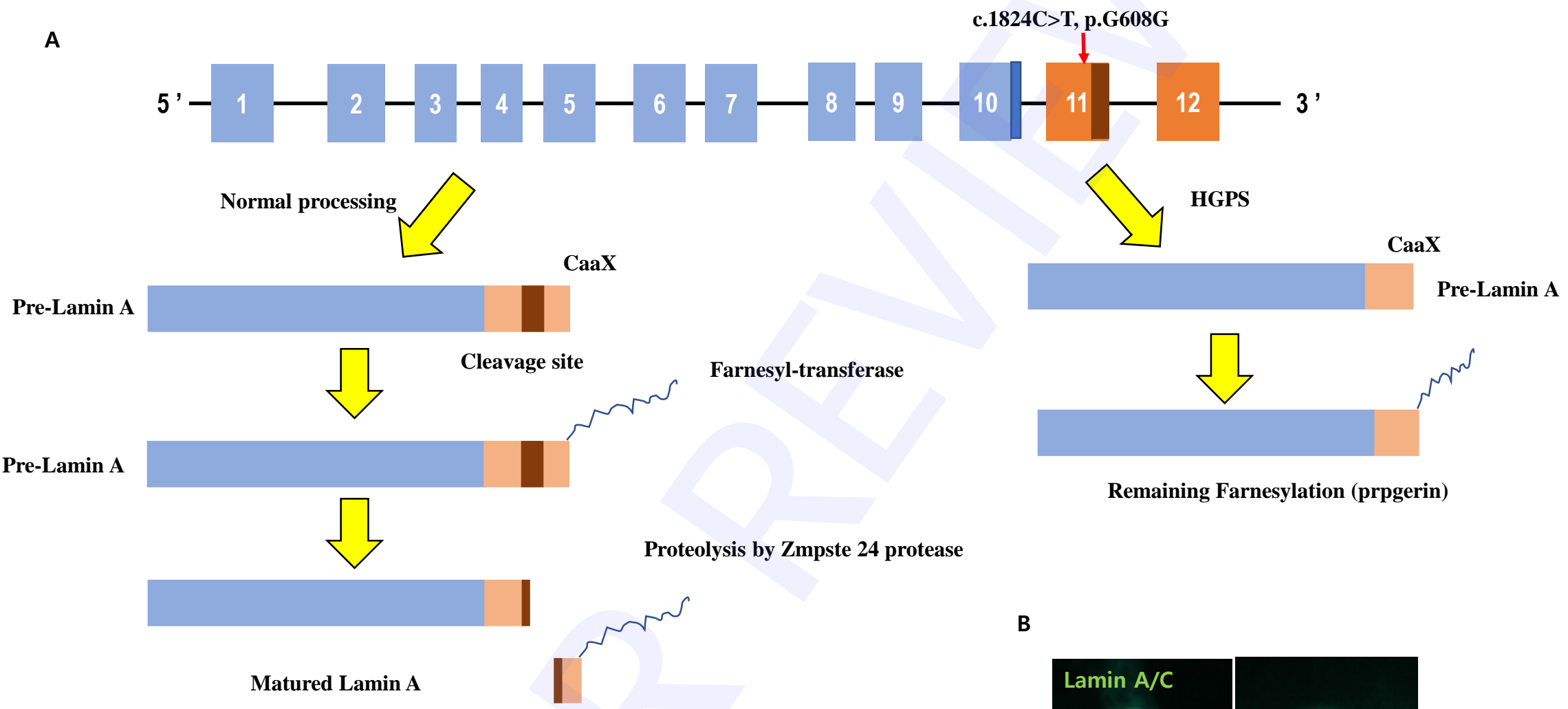


Fig. 4

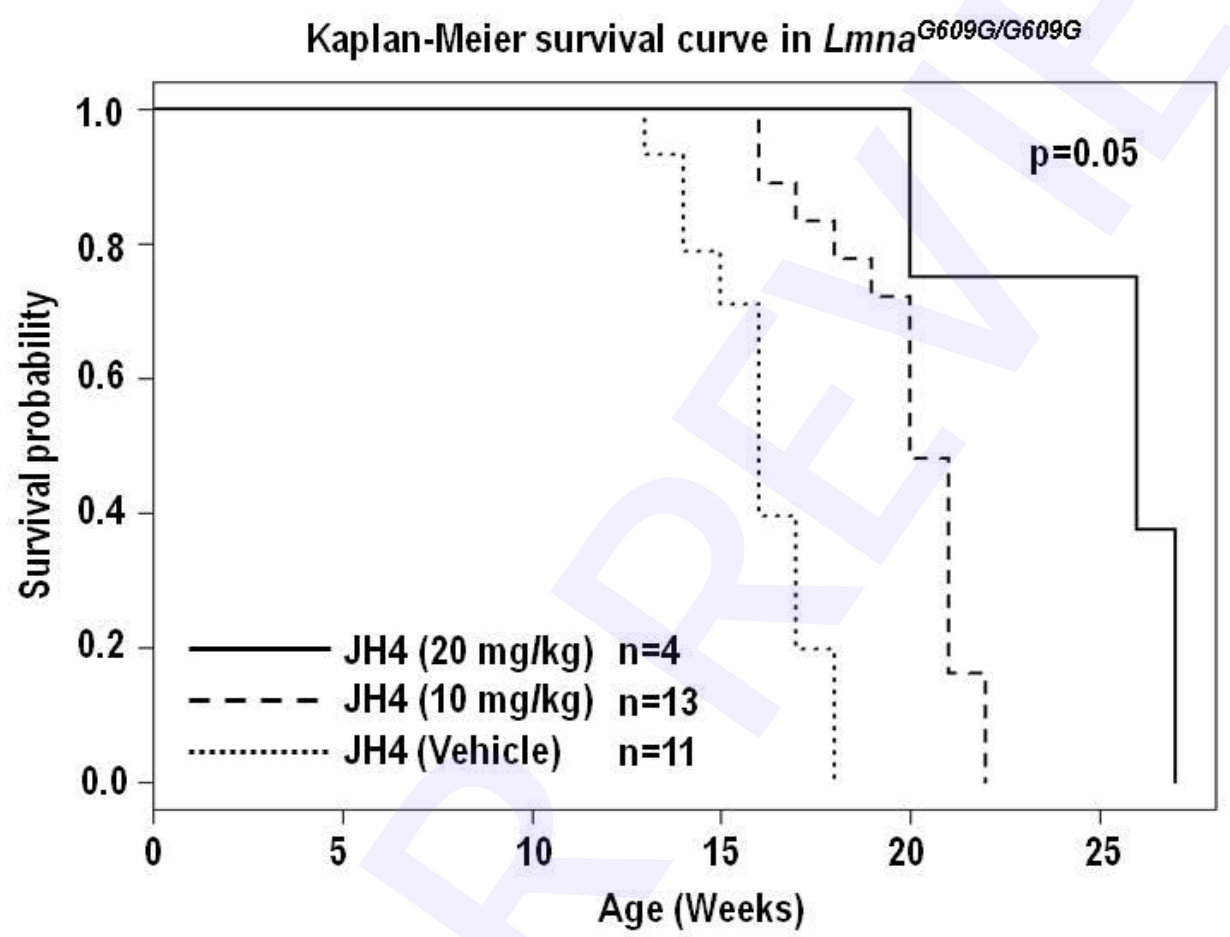


Table 1

Muscular dystrophy					Neuropathy		Lipodystrophy		Segmental progeroid			
CDM1A		EDMD			MLF	MDC	LGMD1B	CMT2B1	FPLD2	MAD	AWS	HGPS
Q6X	E203K	Q6X	G232E	G449D	A57P	N39S	R25G	R298C	R25W	V440M	A57P	T10I
R25G	E203G	R25P	L248P	R453W	L59R	R50P	Y259X		R60G	R471C	R133L	S143E
R25W	L215P	R25G	R249Q	L454P		R249W	E358K		R62G	R527C	L140R	S143F
L59R	R225X	E33G	R249W	N456I		L302P	R377H		ΔK208	R527H	D300N	E145K
R60G	Y267C	L35V	F260L	N456K		E358K	R377L		D230N	A529V	Q656Q	R471C
E82K	E317K	N39S	Y267C	D461Y		L380S	R399C		G456D			R527C
L85R	A347K	A43T	S268P	W467R		R453P	Y481H		R482W			T528M
R89L	R349L	Y45C	L271P	I469T		R455P			R482Q			M540T
K97E	Q355X	R50S	Q294P	W520S		N456D			R482L			K542N
S143P	R399C	I63S	S295P	R527P					P485R			E578V
E161K	R435C	I63N	S303P	T528K					K486N			V607V
R190W	R541C	E65G	R336Q	T528R					S573L			G608S
D192G	R541S	R89C	R343Q	L529P					R582H			G608G
N195K	S573L	R133P	E358K	L530P					R584H			T623S
	R644C	L140P	E361K	R541H								
		T150P	M371K	R541S								
		R189P	R377L	R541P								
		R190Q	R386K	G602S								
		R196S	R401C	R624H								
		H222P	V442A									
		H222Y	D446V									

CDM1A: Cardiomyopathy, dilated, 1A
EDMD: Emery-Dreifuss Muscular dystrophy
MLF: Malouf syndrome
MDC: Muscular dystrophy, congenital
LGMD1B: Muscular dystrophy, limb-gardle, type 1B

CMT1B1: Charcot-Marie-Tooth disease, type 2B1
FDLD2: Lipodystrophy, familial partial, 2
MAD: Mandibuloacral dysplasia lipodystrophy
AWS: Atypical Werner syndrome
HGPS: Hutchinson-Gilford progeria syndrome

Table 2

Abbreviation	Mutation	Homozygous Mouse Phenotype	Heterozygous Mouse Phenotype	Disease in Human	Ref
Lmna ^{-/-}	Destruction of exons 8 to part of 11 by using insertion of neomycin resistant cassette	Growth rate retardation. Body weight loss. Emery-Dreifuss muscular dystrophy (EDMD)-like phenotype	No apparent abnormalities	Not described	53
Zmpste24 ^{-/-}	Deletion of exons 2, 3 using insertion of neomycin resistant cassette	Growth rate reduction. Pre-mature aging	No apparent abnormalities	Not described	54
Lmna ^{GT -/-}	A promoter trap insertion into intron 2 resulting in a Lamin A-progerin fusion allele	Cardiac hypertrophy causing functional failure. Skeletal muscle hypotrophy.	No apparent abnormalities	Not described	55
Lmna ^{LCO/LCO}	Deletion of last 150 nucleotides of exon 11 and deletion of intron 11	No apparent abnormalities	No apparent abnormalities	Not described	56
Lmna ^{LAO/LAO}	Mature Lamin A only	No apparent abnormalities	No apparent abnormalities	Not described	22
EDM ^{-/-}	Emerin deletion	No apparent abnormalities (slight retardation on muscle regeneration)	No apparent abnormalities	EDMD	57,58

Table 3

Abbreviation	Mutation	Homozygous Mouse Phenotype	Heterozygous Mouse Phenotype	Disease in Human	Ref
ΔK32	Deletion of K32 in the N-terminal domain of lamins A/C	Kinked tail. Growth retardation. Stagnation in weight gain. Congenital muscular dystrophy.	Indistinguishable phenotype	Congenital muscular dystrophy.	59
Disheveled hair and ear (Dhe)	Spontaneous L52R mutation	Defect in bone mineralization, and low collagen expression causing abnormal morphology of skull, jaws, and ears. Low bone mineral density.	Defect in bone mineralization, and low collagen expression causing abnormal morphology of skull, jaws, and ears. Low bone mineral density.	Not described	60
N195K	Missense mutation	Weight loss. Shortened lifespan. Dilated cardiomyopathy (DCM)-like phenotype	Not described	Dilated cardiomyopathy (DCM)	61
H222P	Missense mutation	Indistinguishable phenotype during sexual maturity stage. Weight loss and reduced growth rate in adult stages. Cardiac dysfunction. Skeletal muscle dystrophy. Lipodystrophy.	Indistinguishable phenotype	Not described	62
M371K	Missense mutation	Cardiac pathology (Increased cytoplasmic eosinophilia of cardiomyocytes, focal edema, fragmented cardiomyofibrils and pyknotic-appearing nuclei)	Not described	Not described	63
R482Q	Missense mutation	Not described	Familial partial lipodystrophy of the Dunnigan type (FPLD2)	Familial partial lipodystrophy of the Dunnigan type (FPLD2). No homozygous	64

Table 4

Abbreviation	Mutation	Homozygous Mouse Phenotype	Heterozygous Mouse Phenotype	Disease in Human	Ref
Lamin B1 Δ/Δ	Portion of the rod domain and the entire carboxyl-terminal domain are replaced by gene trap insertion	Embryonic lethal, reduced embryo size and shows abnormal embryo shape. Abnormal lung development and bone ossification in embryo development	No apparent abnormalities	Not described	68
Lamin B1 BAC	Overexpression of Lamin B1 using BAC insertion	Autosomal-dominant leukodystrophy (ADLD). Aberrant myelin formation, axonal degeneration, and demyelination causing cognitive and motor deficits.	No apparent abnormalities	Autosomal-dominant leukodystrophy (ADLD)	69