

BMB Reports – Manuscript Submission

Manuscript Draft

Manuscript Number: BMB-16-077

Title: Identification of amino acids related to catalytic function of *Sulfolobus solfataricus* P1 carboxylesterase by site-directed mutagenesis and molecular modeling

Article Type: Article

Keywords: *Sulfolobus solfataricus* P1; Carboxylesterase; Thermostability; Site-directed mutagenesis; Molecular modeling

Corresponding Author: Hee-Bong Lee

Authors: Hee-Bong Lee^{1,*}

Institution: ¹Yun-Ho Choi and ²# Ye-Na Lee, Kangwon National University, ³Young-Jun Park and ⁴Sung-Jin Yoon, Korea Research Institute of Bioscience and Biotechnology,

Identification of amino acids related to catalytic function of *Sulfolobus solfataricus* P1 carboxylesterase by site-directed mutagenesis and molecular modeling

Yun-Ho Choi^{1†}, Ye-Na Lee^{1†}, Young-Jun Park², Sung-Jin Yoon² & Hee-Bong Lee^{1*}

¹Department of Biochemistry, College of Natural Sciences, Kangwon National University, Chuncheon, 200-701, ²Immunotherapy Research Center, Korea Research Institute of Bioscience and Biotechnology, Daejeon, 305-806, Korea

*Corresponding author. Tel: +82-33-250-8512; Fax: +82-33-259-5664; E-mail: leejbong@kangwon.ac.kr

[†] Both of these authors contributed equally to this work.

The archaeon *Sulfolobus solfataricus* P1 carboxylesterase is a thermostable enzyme with a molecular mass of 33.5 kDa belonging to the mammalian hormone-sensitive lipase (HSL) family. In our previous study, we purified the enzyme and suggested the expected amino acids related to its catalysis by chemical modification and a sequence homology search. For further validating these amino acids in this study, we modified them using site-directed mutagenesis and examined the activity of the mutant enzymes using spectrophotometric analysis and then estimated by homology modeling and fluorescence analysis. As a result, it was identified that Ser151, Asp244, and His274 consist of a catalytic triad, and Gly80, Gly81, and Ala152 compose an oxyanion hole of the enzyme. In addition, it was also determined that the cysteine residues are located near the active site or at the positions inducing any conformational changes of the enzyme by their replacement with serine residues.

Keywords: *Sulfolobus solfataricus* P1, Carboxylesterase, Thermostability, Site-directed mutagenesis, Molecular modeling

INTRODUCTION

Esterases (EC 3.1.1.x) are hydrolases that catalyze the cleavage of the ester bond, and they are widely distributed in all living organisms, Bacteria, Archaea, and Eukarya (1). These ester hydrolases include two major groups: carboxylesterases (EC 3.1.1.1), which hydrolyze carboxyl esters with short chains (<10 carbon atoms), and lipases (EC 3.1.1.3), which hydrolyze acylglycerols with long chains (≥ 10 carbon atoms) (2).

Bacterial esterases are classified into 14 families (I to XIV) mainly based on the comparison of their amino acid sequences and some fundamental biological properties (3, 4). Among these families, archaeal esterases are known to be grouped into only two families, IV and V. Most archaeal esterases belong to family IV, which show high amino acid similarity to the mammalian hormone-sensitive lipase (HSL) family (5). Esterases belonging to the α/β hydrolase superfamily are known to contain a typical catalytic triad consisting of Ser, Asp, and His residues and a conserved pentapeptide, Gly-x-Ser-x-Gly (where x is any amino acid residue), containing the serine residue of the catalytic triad (2, 6, 7). Recently, the number of structural studies of esterases has increased remarkably with the analysis of their gene sequences and crystal structures together with active studies of their genomes. However, as compared to the large numbers of crystal structures of bacterial esterases, only a few crystal structures of esterases from archaea such as *Archaeoglobus fulgidus* (8), hot springs in Indonesia (9), *Pyrobaculum calidifontis* VA1 (10), and *Sulfolobus tokodaii* (11) were known until now.

Esterases have attracted enormous attention because of their industrial applications in detergents, food, dairy, diagnostics, and biotransformation (12). Most esterases used in industry are bacterial enzymes. However, their use in industrial processes has many restrictions at high temperatures or in the presence of various chemicals like organic solvents. Hence, esterases from hyperthermophilic archaea dwelling in extremely harsh conditions are good candidates in industrial applications.

Sulfolobus solfataricus P1 (DSM1616) used in this study is a hyperthermophile belonging to the thermoacidophilic archaeon, that inhabits sulfur rich volcanic hot springs in a high-temperature

(>75°C) and low-pH (<pH 4) environment (13). We reported in previous paper that a new carboxylesterase from this archaeon *S. solfataricus* P1 (SsoP1Est) was purified and several biochemical properties of the enzyme were characterized, and then, its gene was identified and expressed stably in *E. coli* (14). Particularly, in this paper, we suggested the following from the examination of the amino acids presumed to be involved in the catalytic mechanism of the enzyme by a chemical modification study and sequence alignment with homologous esterases. First, Ser, His, and Cys residues may be related to the catalytic activity of the enzyme, as modifications of the enzyme with Ser-specific inhibitors [phenylmethylsulfonyl fluoride (PMSF) and diisopropylfluorophosphate (DFP)], a His-specific inhibitor [diethyl pyrocarbonate (DPC)], and Cys-specific inhibitors [HgCl₂ and *p*-chloromercuribenzoate (PCMB)], inactivated the enzyme. Second, the SsoP1Est belongs to the HSL family exhibiting a classic α/β hydrolase fold by sequence alignment with homologous esterases, which were well characterized in the structure. Thus, it contains a typical catalytic triad of esterases, which is expected to be composed of Ser151, Asp244, and His274, and another typical oxyanion hole, which is presumed to be composed of Gly80, Gly81, and Ala152.

Hence, to clarify the roles of these amino acids expected to be related to the catalytic process of the SsoP1Est reported in the previous paper, we constructed the mutant enzymes by site-directed mutagenesis, examined the catalytic activity of these mutant enzymes, and suggested their roles using the homology modeling method and fluorescence analysis.

RESULTS AND DISCUSSION

Identification of mutant plasmids and purification of native and mutant SsoP1Ests

The correct mutations of the mutant plasmids containing the SsoP1Est gene mutated at the desired positions, as shown in Table 1, were identified by DNA sequencing (data not shown).

The native SsoP1Est used as the control was expressed in *E. coli*, and the expressed enzyme was

purified 19.35-fold with a yield of 40% to apparent homogeneity from cell extracts. The apparent homogeneity of the purified native and mutant enzymes were confirmed on SDS-polyacrylamide gel, and the molecular mass of the purified native and mutant enzymes was all the same, approximately 34 kDa, as that of the recombinant SsoP1Est as described previously (14) (data not shown).

Catalytic activity of mutant SsoP1Ests

In previous studies, the residues Ser151, Asp244, and His274 were tentatively identified as the catalytic triad of the native SsoP1Est by chemical modification experiments using chemical inhibitors for specific amino acids and sequence alignment with homologous esterases (7-11, 14). Based on these findings, in the present investigation we have produced the mutants Ser151Ala, Asp244Asn, and His274Asn. The activity of the purified mutant carboxylesterases was measured. The native carboxylesterase, SsoP1Est, was used as a control. As expected, the mutation of these three amino acids almost completely inactivated the enzymes (Table 2). These results indicate that each of the three amino acids is crucial to the enzymatic catalysis and that the catalytic triad in the SsoP1Est consists of the residues Ser151, Asp244, and His274. These results that Ser, Asp, and His are crucial to the catalysis of the enzyme were the same as those from other esterases in our previous studies using site-directed mutagenesis (15, 16).

In addition, to confirm whether Gly80, Gly81, and Ala152, as expected from sequence alignment with other homologous esterases showing high sequence identities (Fig. 1) and as well characterized in previous studies (14), are the amino acids that make up the oxyanion hole stabilizing a short-lived oxyanion by hydrogen bonding, these three amino acids were mutated by site-directed mutagenesis to Gly80Glu, Gly81Glu, and Ala152Phe, respectively. The result obtained from the activity measurements of these mutant carboxylesterases is shown in Table 2. Compared to the control, the activities of the mutant enzymes showed less than 17%. These results indicate that all three amino acids make up the oxyanion hole and are necessary for the catalytic process of the enzyme. Hence,

these amino acids are also conserved well in other esterases (7-11, 14), as shown in Fig. 1.

Identification of roles of cysteines in SsoP1Est

To examine the roles of cysteine residues in SsoP1Est because the modification of cysteines by cysteine-specific reagents, HgCl₂ and PCMB, significantly inactivated the enzyme in a previous study (14), each cysteine residue (Cys94, Cys101, Cys103, and Cys184) in the enzyme was mutated by site-directed mutagenesis to Cys94Ser, Cys101Ser, Cys103Ser, and Cys184Ser, respectively. As shown in Table 2, each mutation of these four cysteines in the enzyme led to remarkable inactivation of the enzyme, although the Cys101Ser mutant enzyme showed a little less inhibition (68%) than the other mutants (>82%) as compared to the control. The result that the substitution of each cysteine residue with serine residue greatly decreases the catalytic activity of the enzyme indicates that these cysteine residues may be present at and/or near the active site of the enzyme or that the substitution of cysteines with serines might induce the conformational change in the active site of the enzyme due to the difference in polarity between cysteine and serine.

Amino acid sequence comparison

To elucidate the above inhibitory results of the replacement of cysteines by serines, we compared the amino acid sequence of the SsoP1Est with those of other known archaeal esterases in the database. As shown in Fig. 1, the amino acid sequence of the SsoP1Est showed high identities with those of other known esterases from the same *Sulfolobus* genus: The esterase from *S. acidocaldarius* (SacEst) with 99% identity was the most similar, and the next were those from *S. solfataricus* P2 (SsoP2Est, 77%), *S. shibatae* (SshEst, 77%), *S. islandicus* (SisEst, 77%), *S. solfataricus* P1 (DSM 5354; 75%), and *S. tokodaii* (StoEst, 70%), but it showed low identities with those of other archaeal esterases from *P. calidifontis* (PcaEst, 46%), the metagenomic library (MetEst, 43%), and *A. fulgidus* (AfuEst, 34%). In

particular, three cysteines (Cys94, Cys101, and Cys103) of the four cysteines in the SsoP1Est were conserved in esterases from this same *Sulfolobus* genus. On the contrary, only one cysteine (Cys94) was conserved in all other archaeal esterases (Fig. 1) and in all esterases belonging to the HSL-family. This result that more cysteines were conserved in esterases from the *Sulfolobus* seems to be related to the surrounding condition of the *Sulfolobus* genus dwelling in sulfur-rich hot springs. In addition, the substitution of the Cys94 by serine residue could be assumed to significantly affect the catalytic activity of the enzyme due to the 88.1% inhibition as compared to the native enzyme (Table 2). Although it is difficult to explain the exact reason for this inhibition, the higher polarity of the serine residue than the cysteine residue seems to induce the conformational change of the active site in the enzyme because of the easy formation of a hydrogen bond with surrounding residues (Fig. 2B). The inhibition by the mutation of Cys101Ser or Cys103Ser can also be explained by the same reason and by the disruption of the disulfide bond between them, as described previously. However, it remains in question, because these two cysteine residues may not be critical for the catalysis of the enzyme, seeing that AfuEst and MetEst have all serine residues instead of these two cysteine residues in all other esterases from the *Sulfolobus* genus, including SsoP1Est (Fig. 1).

Homology model of SsoP1Est

The confidence score of the three-dimensional (3D) models generated by the I-TASSER Server from multiple threading alignments and iterative assembly simulations was 1.56, meaning high reliability among the values from -5 to 2. As a result, the I-TASSER Server finally presented ten crystal structures on the basis of the Protein Data Bank (PDB) databases reported previously: AfuEst (PDB code: 1jji), *Bacillus subtilis* Brefeldin A esterase (1jkm), *Rhodococcus* sp. heroin esterase (1lzl), *Alicyclobacillus acidocaldarius* esterase (1qz3), MetEst (2c7b), StoEst (3aik), *Mycobacterium marinum* esterase (3qh4), PcaEst (3zwq), bacterial HSL from a metagenomic library (4j7a), and *E. coli* acyl esterase (4krx). In addition, it indicated as a result that the predicted function of the enzyme

is a carboxylesterase (EC 3.1.1.1).

Four structures of these ten crystal structures are those of archaeal esterases—1jji (8), 2c7b (9), 3aik (11), and 3zwq (10). Among these four crystal structures, the StoEst (3aik) was selected and used as a template of homology modeling for SsoP1Est. This was because the StoEst is classified into the same *Sulfolobus* genus and the same HSL family, and it shows the highest sequence identity (68%) with the SsoP1Est (Fig. 1). Based on the best template, StoEst (3aik), the expected structural model of SsoP1Est was created by homology modeling as the superimposed ribbon structure onto it using the UCSF Chimera 1.9 program, as shown in Fig. 2A(i). The locations of Ser151, Asp244, and His274 consisting of the catalytic triad and Gly80, Gly81, and Ala152 forming the oxyanion hole in the SsoP1Est were identified (Fig. 2A(i) and (ii)). In addition, the positions of the four cysteine residues (Cys94, Cys101, Cys103 and Cys184) in SsoP1Est were also exhibited (Fig. 2A(ii)). Particularly, the Cys184 existing only in the SsoP1Est seemed to be located at the surface/outside of the enzyme far away from the other three cysteine residues.

To determine why each mutation of Cys94Ser, Cys101Ser, Cys103Ser, and Cys184Ser inactivated the enzyme, their locations were examined with the colored substitutes of these cysteine residues using the “hydrophobicity surface” program in the UCSF Chimera 1.9 program. As shown in Fig. 2B(i) and (ii), Cys101, Cys103, and Cys184 were observed at the surface of the enzyme, but Cys94 was not. Therefore, Cys94 is located inside the enzyme and seems to be located at or near the active site of the enzyme of which the conformational change can be induced, because the Cys94Ser substitution inactivated the enzyme. Otherwise, this inactivation might be deduced by the enhanced polarity of Ser causing a conformational change around the Cys residue that propagates through the backbone to the active site. On the other hand, Cys101 and Cys103 are located at the surface of the enzyme (Fig. 2B(i)), and the inactivation by the Cys101Ser or Cys103Ser substitution seems to be due to the conformational change inside the active site of the enzyme by the enhanced polarity of Ser or by the disruption of the possible disulfide bridge formed between them, although there is no specific reported evidence for the disulfide bridge between them. Conversely, Cys184 is also observed on the

surface of the enzyme (Fig. 2B(ii)), but the reason the Cys184Ser replacement inactivated the enzyme seems to be a little different from the other cysteines. This is because the Cys184 is located at the entrance/exit of the tunnel for the contact of the substrate to the active site or for the release of the products from the active site and because the amino acids, Ser151 and His274, composing the catalytic triad of the enzyme can be seen very well through the hole together with the Cys184 located at the entrance/exit.

Hence, the modification of Cys184 by Cys-specific inhibitors, HgCl_2 and PCMB, and the mutation of Cys184Ser could significantly affect the catalytic activity of the enzyme. This is because these chemical modifications can increase the steric hindrance for the entrance/exit of substrate/products from the active site and because the Cys184Ser substitution can induce the conformational change of the active site due to the higher polarity of the serine, respectively. The location of Cys184 was analyzed using the “hydrophobicity surface” program and described based on the models of the hypothetical substrate entrance/product exit tunnel in the 3D crystal structures of StoEst (11) and PcaEst (10) previously reported. However, the cysteine residue, Cys184, in the SsoP1Est is not conserved at the same position in these two esterases (Fig. 1). In addition, the result (Table 2) that the mutation of Cys184Ser inactivated the SsoP1Est was similar to the results that Cys123Ser diene lactone hydrolase (the active site, Cys123) from *Pseudomonas knackmussii* showed approximately 10–15% of wild-type activity and a 60-fold decreased K_m for PNP-acetate (17), that Cys151Ser diene lactone hydrolase (the active site, Cys151) from *S. solfataricus* P1 showed little activity as compared to wild-type toward the substrate, PNP-caprylate (18), and that each replacement of all three cysteine residues with serine residue in arylesterase from *S. solfataricus* P1 inhibited 70–96% of wild-type activity (16). The diene lactone hydrolase enzyme belongs to the same α/β hydrolase superfamily as serine esterases.

Fluorescence analysis

To understand the result that each mutation of Cys94Ser, Cys101Ser, Cys103Ser, and Cys184Ser inactivated the enzyme significantly (Table 2), any conformational changes by these mutations were examined by a fluorescence study using two tryptophan residues that existed in the enzyme. As shown in Fig. 2C, each substitution of the four cysteine residues resulted in a red shift of the intrinsic tryptophan fluorescence spectrum. This indicates that at least part of the Trp residues became more exposed to a hydrophilic environment due to the conformational change caused by the Cys substitution. It is not easy, however, to explain how such a conformational change leads to the inactivation of the enzyme unless their 3D structures are determined.

MATERIALS AND METHODS

Strains, plasmids, and growth conditions

XL1-Blue supercompetent cells and *E. coli* DH5 α ultra-competent cells were used as host cells for mutant plasmids containing the mutated SsoP1Est genes produced by polymerase chain reaction (PCR), whereas *E. coli* BL21 (DE3) cells harboring all the recombinant plasmids including the mutant plasmids were used for gene expressions. The vector utilized for expression was pET-11d (Novagen). These *E. coli* DH5 α and *E. coli* BL21 (DE3) cells were routinely grown at 37°C in Luria-Bertani (LB) medium with ampicillin (100 μ g/ml).

Construction of recombinant plasmid DNAs containing mutant SsoP1Est genes

Standard molecular cloning techniques were employed throughout (19). The transformed *E. coli* BL21 (DE3) cells harboring the recombinant DNA plasmid (pSsoP1Est), which the SsoP1Est gene was incorporated into the BamHI site of the expression vector, pET-11d, were made in a previous study (14). The constructed pSsoP1Est containing the SsoP1Est gene obtained from these transformed cells was used as the template for the mutations (Ser151Ala, Asp244Asn, and His274Asn) of the

expected catalytic triad (Ser151, Asp244, and His274), for the mutations (Gly80Glu, Gly81Glu, and Ala152Phe) of the expected oxyanion hole (Gly80, Gly81, and Ala152), and for the mutations (Cys94Ser, Cys101Ser, Cys103Ser, and Cys184Ser) of the expected cysteine residues (Cys94, Cys101, Cys103, and Cys184), which might be related respectively to the catalytic process of the SsoP1Est as described in a previous paper (14), in the SsoP1Est gene by site-directed mutagenesis. As shown in Table 1, mutagenic oligonucleotide primers were designed, and PCR based on the QuikChange II site-directed mutagenesis kit (Stratagene Co.) for the construction of SsoP1Est mutant plasmids was carried out using pSsoP1Est as the template DNA and forward- and reverse- primers with lengths of 25 to 42 bases mutated at the desired sites in the SsoP1Est gene, according to the guidelines and protocol recommended by the manufacturer. The PCR conditions were as follows: 1 cycle of 30 s at 95°C followed by 18 cycles of 30 s at 95°C, 1 min at 55°C, and 7 min at 68°C. The products were treated with 1 µl of DpnI (10 U/µl) at 37°C for 1 h to digest the template DNA, the PCR products were transformed into XL1-Blue supercompetent cells for nick repair, and then the mutated cells were screened on LB-ampicillin agar plates containing 80 µg/ml 5-bromo-4-chloro-3-indolyl-beta-D-galactopyranoside (X-gal) and 20 mM isopropyl-L-D-thiogalactoside (IPTG). The mutant plasmids obtained from these cells were sequenced to confirm the presence of the correct mutations.

Overexpression and purification of mutant enzymes

The mutant plasmids were transformed into *E. coli* BL21 (DE3) competent cells for overexpression and cultivated in 1 liter of LB medium supplemented with ampicillin (100 µg/ml) at 37°C. Transformed cells containing the expression vector plasmid, pET-11d, and the native recombinant plasmid, pSsoEst, were used as controls. When the optical density of cultured cells reached 0.5 at 600 nm, 1 mM IPTG was added to induce gene expression. After an additional 5-h cultivation, the overexpressed mutant enzymes from the cultivated transformed cells were purified using twice-heating of cell extracts and Butyl-Sepharose column as described in the purification of the native enzyme in previous study (14). The identification of the mutant enzymes during the purification

procedure was performed by a molecular size comparison with the native one on an SDS-PAGE gel.

Enzyme assay and activity staining

The native and mutant enzyme assay was performed with an artificial chromogenic substrate, *p*-nitrophenyl (PNP) caprylate (C₈), as described in previous study (14). The enzyme reaction at 60°C was started by the addition of the purified native recombinant or mutant carboxylesterase enzyme (12 µg/ml). Measurements were carried out at least three times. Standard deviations never exceeded 10% of the mean values.

Two different activity staining methods carried out on tributyrin-emulsified agar plates and on a gel with α -naphthyl acetate (α -NA) after SDS-PAGE were employed for tracing carboxylesterase activity during the purification procedure as described previously (14).

Determination of molecular mass of native recombinant SsoP1Est and mutant enzymes

The molecular weight of the purified native recombinant or mutant carboxylesterase was determined on 12.5% (w/v) SDS-polyacrylamide gel using low-molecular-weight standards. Gels were stained with silver.

Homology modeling of native recombinant SsoP1Est

To construct a structural model of the native recombinant SsoP1Est, the I-TASSER protocol (19,20) was used. By repeating these procedures several times with the I-TASSER Server, several models were constructed. The structural models with the highest confidence score of these models was selected to compare with that of SsoP1Est. The UCSF Chimera 1.9 program was employed for molecular visualization and analysis.

Fluorescence spectroscopy

Emission spectra of normal esterase (SsoP1Est) and Ser-mutant esterases (Cys94Ser, Cys101Ser, Cys103Ser, and Cys184Ser) were obtained with a PerkinElmer LS-55 fluorescence spectrometer at a protein concentration of 0.1 mg/ml in 10 mM sodium phosphate buffer, pH 7.0. The excitation was set at 298 nm in order to exclude the tyrosine contribution to the overall fluorescence emission, and the emission was recorded from 300 nm to 400 nm. The data were transferred to an ASCII file, and the emission spectra were recorded using FL Win Lab software installed in the PerkinElmer fluorescence spectrometer.

ACKNOWLEDGEMENTS

This study was supported by a 2014 Research Grant from Kangwon National University (No. 120141503), and by the KRIIBB Research Institute Program, Republic of Korea.

REFERENCES

1. Okuda H (1990) Esterases; in A study of enzymes, Kuby SA (eds.), 563–577, Vol. 2, CRC press, Boca Raton, FL, USA
2. Jaeger KE, Dijkstra BW and Reetz MT (1999) Bacterial biocatalysts: molecular biology, threedimensional structures, and biotechnological applications of lipases. *Annu Rev Microbiol* 53, 315-351
3. Arpigny JL and Jaeger KE (1999) Bacterial lipolytic enzymes: classification and properties. *Biochem J* 343, 177-183
4. Rao L, Xue Y, Zhou C, et al (2011) A thermostable esterase from *Thermoanaerobacter tengcongensis* opening up a new family of bacterial lipolytic enzymes. *Biochim Biophys Acta* 1814, 1695-1702
5. Holm C, Osterlund T, Laurell H and Contreras JA (2000) Molecular mechanisms regulating hormone-sensitive lipase and lipolysis. *Annu Rev Nutr* 20, 365-393
6. Holmquist M (2000) Alpha/beta-hydrolase fold enzymes: structures, functions and mechanisms. *Curr Protein Pept Sci* 1, 209-235
7. Schrag JD and Cygler M (1997) Lipases and alpha/beta hydrolase fold. *Methods Enzymol* 284, 85-107
8. De Simone G, Menchise V, Manco G et al (2001) The crystal structure of a hyperthermophilic carboxylesterase from the archaeon *Archaeoglobus fulgidus*. *J Mol Biol* 314, 507-518
9. Byun JS, Rhee JK, Kim ND et al (2007) Crystal structure of hyperthermophilic esterase

- EstE1 and the relationship between its dimerization and thermostability properties. *BMC Struct Biol* 7:47, 1-11
10. Palm GJ, Fernández-Álvaro E, Bogdanović X et al (2011) The crystal structure of an esterase from the hyperthermophilic microorganism *Pyrobaculum calidifontis* VA1 explains its enantioselectivity. *Appl Microbiol Biotechnol* 91, 1061-1072
 11. Angkawidjaja C, Koga Y, Takano K and Kanaya S (2012) Structure and stability of a thermostable carboxylesterase from the thermoacidophilic archaeon *Sulfolobus tokodaii*. *FEBS J* 279, 3071-3084
 12. Panda T and Gowrishankar BS (2005) Production and applications of esterases. *Appl Microbiol Biotechnol* 67, 160-169
 13. Brock TD, Brock KM, Belly RT and Weiss RL (1972) *Sulfolobus*: a new genus of sulfur oxidizing bacteria living at low pH and high temperature. *Arch Microbiol* 84, 54-68
 14. Park Y., Choi SY and Lee HB (2006) A carboxylesterase from the thermoacidophilic archaeon *Sulfolobus solfataricus* P1; purification, characterization, and expression. *Biochim Biophys Acta* 1760, 820-828
 15. Nam JK, Park YJ and Lee HB (2013) Cloning, expression, and characterization of a novel thermostable esterase from the archaeon *Sulfolobus solfataricus* P1. *J Mol Catal B: Enzymatic* 94, 95-103
 16. Park YJ, Yoon SJ and Lee HB (2008) A novel thermostable arylesterase from the archaeon *Sulfolobus solfataricus* P1: purification, characterization, and expression. *J Bacteriol* 190, 8086-8095
 17. Pathak D, Ashley G and Ollis D (1991) Thiol protease-like active site found in the enzyme diene lactone hydrolase: localization using biochemical, genetic, and structural tools. *Proteins* 9, 267-279

18. Park YJ, Yoon SJ and Lee HB (2010) A novel diene lactone hydrolase from the thermoacidophilic archaeon *Sulfolobus solfataricus* P1: Purification, characterization, and expression. *Biochim Biophys Acta* 1800, 1164-1172
19. Sambrook J, Fritsch EF and Maniatis T (1989) *Molecular Cloning: A Laboratory Manual*, 2nd ed., Cold Spring Harbor Laboratory Press, New York, USA
20. Roy A, Kucukural A and Zhang Y (2010) I-TASSER: a unified platform for automated protein structure and function prediction. *Nat Protoc* 5, 725-738
21. Zhang Y (2008) I-TASSER server for protein 3D structure prediction. *BMC Bioinformatics* 9:40

Table 1. Complementary mutagenic primers for generation of mutant carboxylesterases.

| Primer ^a | Sequence ^b |
|---------------------|---|
| Ser151Ala-f | 5'-TCGGCGGAGAC G CTGCTGGAGGAAA-3' |
| Ser151Ala-r | 5'-TTTCCTCCAGCAG G CGTCTCCGCCGA-3' |
| Asp244Asn-f | 5'-GATAATAACTGCTGAGTATA A TCCTCTTAGAGATCAAGG-3' |
| Asp244Asn-r | 5'-CCTTGATCTCTAAGAGGAT T ATACTCAGCAGTTATTATC-3' |
| His274Asn-f | 5'-GTCAGGTTTAATAACGTAATA A ATGGCTTCGTCTCTTTTTTC-3' |
| His274Asn-r | 5'-GAAAAAAGAGACGAAGCCAT T TATTACGTTATTAAACCTGAC-3' |
| Gly80Glu-f | 5'-CTAGTGTATCTTCATGGTG A AGGATTTGTTATAGGAGA-3' |
| Gly80Glu-r | 5'-TCTCCTATAACAAATCCT T CACCATGAAGATACACTAG-3' |
| Gly81Glu-f | 5'-GTGTATCTTCATGGTGGAG A ATTTGTTATAGGAGATATTG-3' |
| Gly81Glu-r | 5'-CAATATCTCCTATAACAAAT T CTCCACCATGAAGATACAC-3' |
| Ala152Phe-f | 5'-TCGGCGGAGACAGT T TTGGAGGAAACTTAT-3' |
| Ala152Phe-r | 5'-ATAAGTTTCCTCCA A ACTGTCTCCGCCGA-3' |
| Cys94Ser-f | 5'-AATCATATGACCCAGTT A GTAGGGCAATAACCAAC-3' |
| Cys94Ser-r | 5'-GTTGGTTATTGCCCTAC T AACTGGGTCATATGATT-3' |
| Cys101Ser-f | 5'-GCAATAACCAACGCG A GTAACTGCGTTGTAG-3' |
| Cys101Ser-r | 5'-CTACAACGCAGTTAC T CGCGTTGGTTATTGC-3' |
| Cys103Ser-f | 5'-CAACGCGTGTAAC A GCGTTGTAGCGTC-3' |
| Cys103Ser-r | 5'-GACGCTACAACG C TGTTACACGCGTTG-3' |
| Cys184Ser-f | 5'-TACTGGTGCAGACT C CACATCAAGGTCAAT-3' |
| Cys184Ser-r | 5'-ATTGACCTTGATGTG G AGTCTGCACCAGTA-3' |

^a f and r, forward and reverse primers, respectively.

^b Boldface indicates mutated nucleotide residues.

Table 2. Specific activities of mutant carboxylesterases by each substitution of amino acid residues.

| Carboxylesterase | Sp. act. (U/mg) | Relative activity (%) |
|------------------|--------------------|--------------------------|
| Wild type | 167.00 | 100 |
| Ser151Ala | 0.07 | 0.04 |
| Asp244Asn | 2.59 | 1.55 |
| His274Asn | 0.90 | 0.54 |
| Gly80Glu | 23.54 | 14.09 |
| Gly81Glu | 28.28 | 16.94 |
| Ala152Phe | 21.42 | 12.83 |
| Cys94Ser | 19.87 | 11.90 |
| Cys101Ser | 52.68 | 31.55 |
| Cys103Ser | 29.98 | 17.95 |
| Cys184Ser | 28.28 | 16.93 |

FIGURE LEGENDS

Fig. 1. Amino acid sequence alignment of HSL-like carboxylesterase (Est) from *S. solfataricus* P1(SsoP1), *S. solfataricus* P2 (SsoP2), *S. islandicus* (Sis), *S. shibatae* (Ssh), *S. tokodaii* (Sto), *P. calidifontis* (Pca), metagenomic library (Met), and *A. fulgidus* (Afu). Amino acid residues that consist of a catalytic triad and an oxyanion hole are indicated by diamonds and stars, respectively. The cysteine residues are indicated by arrows.

Fig. 2. (A) Homology model of SsoP1Est. Amino acids consisting of the catalytic triad and oxyanion hole are exhibited. (i) The ribbon structure of SsoP1Est (light gray) superimposed onto StoEst (gray) used as a template, and (ii) the ribbon structure of SsoP1Est including four cysteine residues. (B) The cysteine residues on the surface of SsoP1Est using “hydrophobicity surface” program. (i) Cys101 (green) and Cys103 (blue), (ii) Cys184 (green) with Ser151 (red) and His 274 (blue) consisting of a catalytic triad appeared inside the substrate entrance/product exit tunnel. (C) Emission spectrum from steady-state tryptophan fluorescence of normal SsoP1Est and mutant esterases. Normal esterase (●), mutant esterases: Cys94Ser (■), Cys101Ser (▲), Cys103Ser (—), and Cys194Ser (◆). Protein concentrations were 0.1 mg/ml.

—MPLDPTIKKLES GFVIPIGKVP—VDEVKVFQIS—SAAPKMDVGNIEDIKIPGTETMIPARVYYPKTK 68 SsoP1Est
 —MPLDPTIKKLES GFVIPIGKVP—VDEVKVFQIS—SAAPKMDVGNIEDIKIPGTETMIPARVYYPKTK 68 SacEst
 —MPLDPRIKELLES GFVIPIGKAS—VDEVKIFRQLA—SAAPKVEVGKVEDIKIPGSEANINARVYLPKAN 68 SsoP2Est
 —MPLDPRIKELLES GFVIPIGKAS—VDEVKIFRQLA—SAAPKVEVGKVEDIKIPGSEANINARVYYPKTK 68 SisEst
 —MPLDPRIKELLES GFVIPIGKAS—VDEVKIFRQLA—SAAPKAEVRKVEDIKIPGSET SINARVYYPKTK 68 SshEst
 —MPLDPRIKELLES GFVIPIGKAS—VDEVKIFRQLA—SAAPKAEVRKVEDIKIPGSET SINARVYYPKTK 68 StoEst
 —MPLSPILRQILQO—LAAQLQFRPDM—VKT VREQFEKSSLILVKMANEPIHRVEDITIPGRGGPIRVRVYRPRDG 74 PoaEst
 —PLDPQIKPILERIRALSI AASP—QELRRQVEEQSRLLTAAVQEP I AETRDVHIPVSGGSI RARVYFPKKA 69 MetEst
 MLDMPIDPVYVYQLAEYFDLSPKFDQFSSAREYREAINRIYEERNR—QLSQHERVERVEDRTIKGRNGDIRVRVYQOKPD 76 AfuEst

** ↓ ↓ ↓
 GPYGILVYLHGGGFVIGDIESYDPVCRAITNACNCVVASIDYRLAPENKFPSAVVDSV DATKWIYENAESLEGKQG—VAV 147 SsoP1Est
 GPYGILVYLHGGGFVIGDIESYDPVCRAITNACNCVVASIDYRLAPENKFPSAVVDSV DATKWIYENAESLEGKQG—VAV 147 SacEst
 GPYGVLVYLHGGGFVIGDIESYDPVCRAITNACNCVVASIDYRLAPEYKFPSAVIDSF DATNWVYNNLDKFDGKMG—VAI 147 SsoP2Est
 GPYGILVYLHGGGFVIGDIESYDPVCRAITNACNCVVASIDYRLAPENKFPSAVIDSF DATNWVYNNLDKFDGKMG—VAI 147 SisEst
 GPYGILVYLHGGGFVIGDIESYDPVCRAITNACNCVVASIDYRLAPENKFPSAVIDSF DATNWVYNNLDKFDGEMG—IAI 147 SshEst
 GPYGVLVYLHGGGFVIGDIESYDPVCRAITNSCQCVTISVDYRLAPENKFPAAVDSF DALKWVYNNSEKFNKYG—IAV 147 StoEst
 ERLPAVYVYHGGGFVIGSVETHDHVCRRLANLSGAVVSV DYRLAPEHKFPAAVEDAYDAAKWVADNYDKLGVDNGKI AV 154 PoaEst
 AGLPAVLYYHGGGFVIGSVETHDHVCRRLANLSGAVVSV DYRLAPEHKFPAAVEDAYDAAKWVADNYDKLGVDNGKI AV 149 MetEst
 S—PVLVYHGGGFVIGSVETHDHVCRRLANLSGAVVSV DYRLAPEHKFPAAVEDAYDAAKWVADNYDKLGVDNGKI AV 154 AfuEst

◆* ↓
 GGDSAGGNLSAVVSLTKGK—INLKHQVL—IYPATG—ADCTSRSM—VEYY—DGYFLTREQIEWFGSQYLRSYMDLLD 219 SsoP1Est
 GGDSAGGNLSAVVSLTKGK—INLKHQVL—IYPATG—ADCTSRSM—VEYY—DGYFLTREQIEWFGSQYLRSYMDLLD 219 SacEst
 AGDSAGGNLA AVVALLSKGK—LNLKYQIL—IYPAVG—FDSVSRSM—IEYS—DGFFLTREHIEWFGSQYLRSYMDLLD 219 SsoP2Est
 AGDSAGGNLA AVVALLSKGK—LNLKYQIL—IYPAVG—FDSVSRSM—IEYS—DGFFLTREHIEWFGSQYLRSYMDLLD 219 SisEst
 AGDSAGGNLA AVVALLSKGK—LNLKYQIL—IYPAVG—FDSVSRSM—IEYS—DGFFLTREHIEWFGSQYLRSYMDLLD 219 SshEst
 GGDSAGGNLA AVTALSKKEN—IKLKYQVL—IYPAVS—FDLITKSL—YDNG—EGFFLTREHIEWFGSQYLRSYMDLLD 221 StoEst
 AGDSAGGNLA AVTALSKKEN—IKLKYQVL—IYPAVS—FDLITKSL—YDNG—EGFFLTREHIEWFGSQYLRSYMDLLD 221 PoaEst
 AGDSAGGNLA AVVSLDRNSGEKLVKKQVL—IYPVVNTGVPTASL—VEFGVAETTSILPIELXVWFGQYLRKPEEAYD 226 MetEst
 GGDSAGGNLA AVVSLDRNSGEKLVKKQVL—IYPVVNTGVPTASL—VEFGVAETTSILPIELXVWFGQYLRKPEEAYD 231 AfuEst

◆ ◆
 IKFSPILNODLTGLPPALIITAEYDPLRDOGEAYANKLLMAGIPVTSVRFNINVHGFVSFFPLIQGMDAIGLIGATLRRVFYNSF 305 SsoP1Est
 IKFSPILNODLTGLPPALIITAEYDPLRDOGEAYANKLLMAGIPVTSVRFNINVHGFVSFFPLIQGMDAIGLIGATLRRVFYNSF 305 SacEst
 FRFSPILVQDLSGLPPALIITAEYDPLRDOGEAYANRLQAGVPVTSVRFNINVHGFVSFFPLIQGMDAIGLIGATLRRVFYNSF 305 SsoP2Est
 FRFSPILVQDLSGLPPALIITAEYDPLRDOGEAYANRLQAGVPVTSVRFNINVHGFVSFFPLIQGMDAIGLIGATLRRVFYNSF 305 SisEst
 FRFSPILVQDLSGLPPALIITAEYDPLRDOGEAYANRLQAGVPVTSVRFNINVHGFVSFFPLIQGMDAIGLIGATLRRVFYNSF 305 SshEst
 FRFSPILVQDLSGLPPALIITAEYDPLRDOGEAYANRLQAGVPVTSVRFNINVHGFVSFFPLIQGMDAIGLIGATLRRVFYNSF 305 StoEst
 PYASPIF—ADLSNLPPALVITAEYDPLRDEGELYAHLLKTRGVRAVAVRYNGVHGFVNFYPILEEGREAVSQIAASI— 307 PoaEst
 FKASPLL—ADLGLPPALVITAEYDPLRDEGELYAHLLKTRGVRAVAVRYNGVHGFVNFYPILEEGREAVSQIAASI— 311 MetEst
 LKAARDAIKHQILIPVNVFVAPTSLLEFGEGLWILDQKIMSWFSEQYFSREED—KFNPLASVIFADINQIAALLVFD— 311 AfuEst

Fig. 1

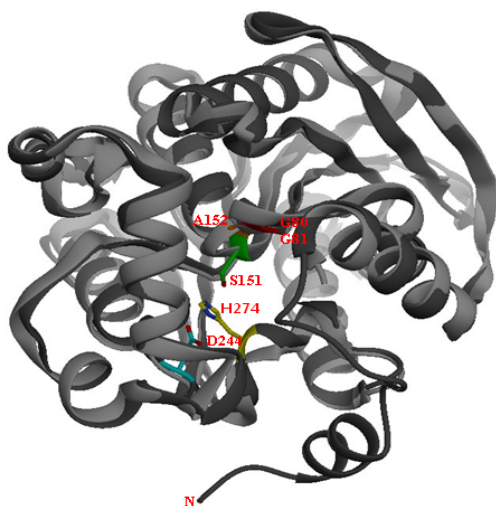
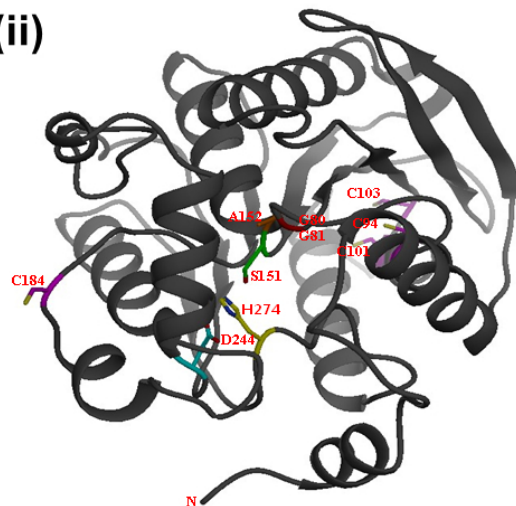
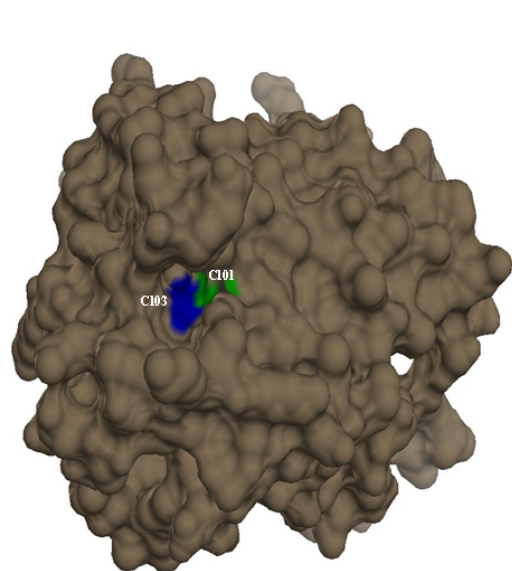
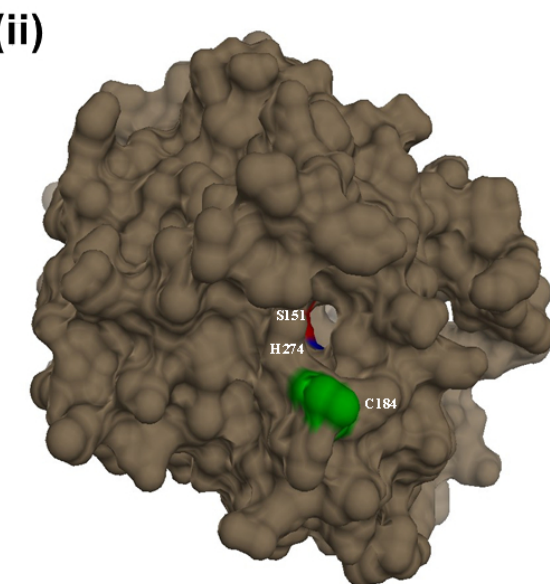
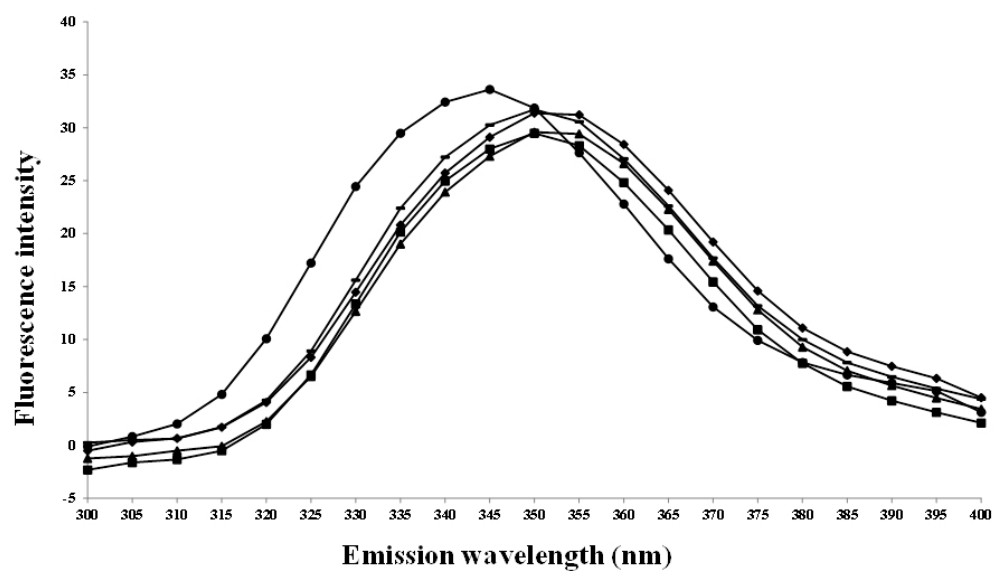
A**(i)****(ii)****B****(i)****(ii)****C**

Fig. 2

UNCORRECTED PROOF